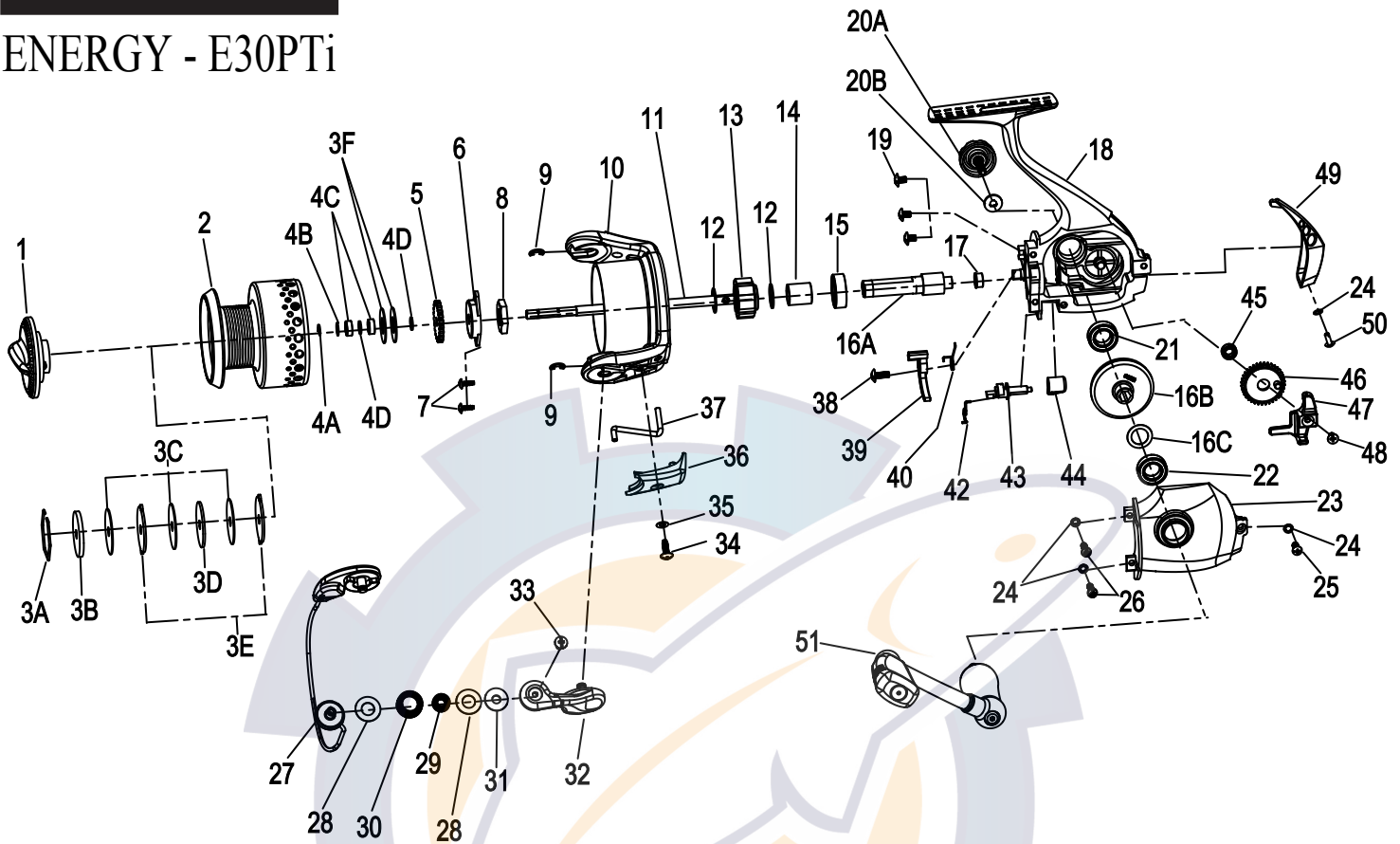




ENERGY - E30PTi



KEY #	DESCRIPTION	PART NO.
1	DRAG KNOB ASSEMBLY	RT332-01
2	SPOOL ASSEMBLY KIT	RT4321-01
	2-SPOOL ASSEMBLY	
	3-DRAG ASSEMBLY KIT	
3	DRAG WASHER KIT	RT4381-01
	3A-DRAG RETAINER	
	3B-DRAG WASHER - CERAMIC	
	3C-DRAG WASHER - KEYED TO MAIN SHAFT	
	3D-DRAG WASHER - FIBER	
	3E-DRAG WASHER - KEYED TO SPOOL	
	3F - DRAG WASHER - CLICK GEAR	
4	SPOOL BEARING KIT	RT4371-01
	4A-SPOOL BEARING CLIP	
	4B- SPOOL BEARING WASHER "A"	QTY 1
	4C-SPOOL BEARING	
	4D-SPOOL BEARING WASHER "B"	QTY 2
5	CLICK GEAR	RQ037-01
6	MAIN SHAFT BUSHING	SQ214-01
7	ROTOR NUT LOCK SCREW	RQ094-01
8	ROTOR NUT	TH006-01
9	E-CLIP	GH034-01
10	ROTOR ASSEMBLY	SQ309-55
11	MAIN SHAFT	RT015-01
12	CLUTCH WASHER	RQ167-01
13	CLUTCH ASSEMBLY	SQ360-01
14	CLUTCH SLEEVE	SQ139-01
15	GEAR BALL BEARING	UK028-01
16	GEAR ASSEMBLY KIT	RT4011-01
	16A-PINION	
	16B-DRIVE GEAR ASSEMBLY	
	16C-ADJUST WASHER	
	17-PINION BUSHING	
17	PINION BUSHING	SQ141-01
18	BODY	RT001-01
19	BEARING SCREW	RQ041-01

KEY #	DESCRIPTION	PART NO.
20	HANDLE CAP SCREW KIT	AT4073-01
	20A-HANDLE CAP SCREW	
	20B-HANDLE SCREW WASHER	
21	GEAR SHAFT BALL BEARING	BL157-01
22	GEAR SHAFT BALL BEARING	BL157-01
23	BODY COVER	SQ023-55
24	BODY COVER SCREW WASHER	RQ142-01
25	BODY COVER SCREW	RQ057-01
26	BODY COVER SCREW	SQ057-01
27	BAIL ASSEMBLY	SQ347-51
28	LINE ROLLER WASHER	DH102-01
29	LINE ROLLER BALL BEARING	GH202-01
30	LINE ROLLER	CH004-01
31	LINE ROLLER COLLAR	GH102-01
32	ARM LEVER ASSEMBLY	SQ307-01
33	LINE SLIDER SCREW	AQ108-07
34	ARM LEVER COVER SCREW	GU077-15
35	ARM LEVER COVER WASHER	SQ142-01
36	ARM LEVER COVER	SQ087-01
37	KICK LEVER	SQ019-01
38	ANTI-REVERSE PAWL SCREW	RQ077-01
39	ANTI-REVERSE PAWL	SQ063-01
40	ANTI-REVERSE PAWL SPRING	RQ061-01
41	ANTI-REVERSE CAM SPRING SCREW	N/A
42	ANTI-REVERSE CAM SPRING	RQ089-01
43	ANTI-REVERSE CAM	RT090-01
44	ANTI-REVERSE LEVER	RQ059-01
45	O/S GEAR BALL BEARING	EH158-01
46	OSCILLATOR GEAR	SQ053-51
47	OSCILLATOR SLIDER	SQ025-01
48	MAIN SHAFT SCREW	RQ100-01
49	BODY REAR COVER	SQ140-55
50	BODY REAR COVER SCREW	RQ062-02
51	HANDLE ASSEMBLY	RT318-51